



## Sport-Tek® PosiCharge® Competitor™ 1/4-Zip Pullover. ST357



This lightweight pullover locks in color and wicks moisture. It's versatile enough for year-round wear.

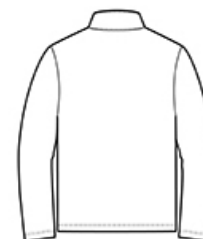
- 3.8-ounce, 100% polyester interlock with PosiCharge technology
- Removable tag for comfort and relabeling
- Cadet collar
- Reverse coil zipper
- Set-in sleeves
- Open cuffs and hem

### CARE INSTRUCTIONS

Machine wash cold with like colors. Do not bleach. Do not use fabric softener. Tumble dry low. Remove promptly. Cool iron if needed. Do not dry clean

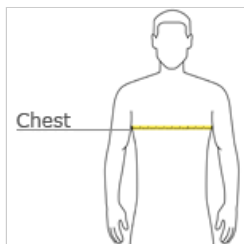


front



back

### HOW TO MEASURE



#### CHEST

With arms down at sides, measure around the upper body, under arms and over the fullest part of the chest.

### SIZE CHART

	XS	S	M	L	XL	2XL	3XL	4XL
Chest	32-34	35-37	38-40	41-43	44-46	47-49	50-53	54-57

### COLOR INFORMATION



Black  
PMS NTR BLACK



Grey Concrete  
CPMS COOL GRAY  
10C



Iron Grey  
PMS 7540C



Lime Shock  
PMS 375C



True Navy  
PMS 533C



True Red  
PMS 200C



True Royal  
PMS 7686C



White

**PORT AUTHORITY.**

## Port Authority® Short Sleeve Carefree Poplin Shirt. W101



Lightweight and breathable, our cotton-rich shirts keep their professional edge thanks to a stain-release finish, which releases stains during washing. Budget-friendly and durable, these virtually carefree shirts feature an Easy Care blend and finish. They also color-coordinate with our Core Classic Pique Polos for seamless uniforming.

- 3.3-ounce, 55/45 cotton/poly
- Dyed-to-match buttons
- Button-down collar
- Back box pleat
- Left chest pocket

### CARE INSTRUCTIONS

Machine wash cold with like colors. Only non-chlorine bleach if needed. Tumble dry low. Warm iron if needed

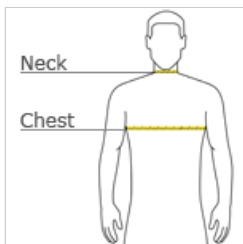


front



back

### HOW TO MEASURE



#### CHEST

With arms down at sides, measure around the upper body, under arms and over the fullest part of the chest.

#### NECK

Measure around the base of the neck, inserting a finger or two between the tape and neck for comfort.

### SIZE CHART

	XS	S	M	L	XL	2XL	3XL	4XL
Chest	32-34	35-37	38-40	41-43	44-46	47-49	50-53	54-57
Neck	17	17	17 1/2	18	19	19 3/4	20 1/2	21 1/4
Pocket Height	5 1/8	5 1/8	5 3/8	5 3/8	5 3/8	5 3/8	5 3/8	5 3/8
Pocket Width	4 5/8	4 5/8	4 7/8	4 7/8	4 7/8	4 7/8	4 7/8	5 1/8

### COLOR INFORMATION



Carolina Blue  
PMS 2142C



Deep Black  
PMS NTR BLACK CPMS 7540C



Graphite  
PMS 533C



River Blue Navy  
PMS 533C



True Royal  
PMS 7687C



White

**PORT AUTHORITY.**

**Port Authority® Ladies 3/4-Sleeve Carefree Poplin Shirt. LW102**



Lightweight and breathable, our cotton-rich shirts keep their professional edge thanks to a stain-release finish, which releases stains during washing. Budget-friendly and durable, these virtually carefree shirts feature an Easy Care blend and finish. They also color-coordinate with our Core Classic Pique Polos for seamless uniforming.

- 3.3-ounce, 55/45 cotton/poly
- Dyed-to-match buttons
- Open collar
- Back box pleat
- Bust darts
- Rounded two-button cuffs

**CARE INSTRUCTIONS**

Machine wash cold with like colors. Only non-chlorine bleach if needed. Tumble dry low. Warm iron if needed

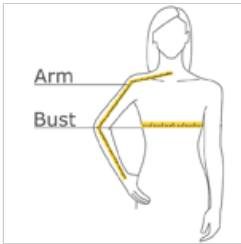


front



back

**HOW TO MEASURE**



**BUST**

With arms down at sides, measure around the upper body, under arms and around the fullest part of the bust.

**ARM**

Place hand on hip. Start at the center of the back of the neck and measure across the shoulder, to the elbow, and then down to the wrist.

**SIZE CHART**

	XS	S	M	L	XL	XXL	3XL	4XL
Size	2	4/6	8/10	12/14	16/18	20/22	24/26	28/30
Bust	32-34	35-36	37-38	39-41	42-44	45-47	48-51	52-55
Arm	30-30 3/4	30 3/4-31 1/2	31 1/2-32	32-32 1/2	32 1/2-33	33-33 3/8	33 3/8-33 3/4	33 3/4-34 1/2

**COLOR INFORMATION**



Carolina Blue  
PMS 2142C



Deep Black  
PMS NTR BLACK CPMS 7540C



Graphite  
PMS 533C



River Blue Navy  
PMS 533C



True Royal  
PMS 7687C



White

**PORT AUTHORITY.**

**Port Authority® EZPerformance™ Pique Polo. K600**



Our value-priced EZPerformance Pique Polos make uniforming easy. These versatile, moisture-wicking styles are remarkably soft, plus they color-coordinate with our popular EZCotton™ Polos.

- 6.2-ounce, 100% spun polyester pique
- 7.4-ounce, 100% spun polyester pique (White)
- Flat knit collar
- Heat transfer label for tag-free comfort
- 3-button placket with dyed-to-match buttons
- Open hem sleeves

**CARE INSTRUCTIONS**

Machine wash cold with like colors; only non-chlorine bleached when needed, tumble dry low, do not use fabric softener, remove promptly, cool iron if necessary, do not dry clean.

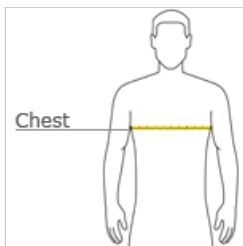


front



back

**HOW TO MEASURE**



**CHEST**

With arms down at sides, measure around the upper body, under arms and over the fullest part of the chest.

**SIZE CHART**

	XS	S	M	L	XL	2XL	3XL	4XL
Chest	32-34	35-37	38-40	41-43	44-46	47-49	50-53	54-57

**COLOR INFORMATION**



Apple Red  
PMS 201C



Black  
PMS NTR BLACK CPMS 2142C



Carolina Blue



Deep Forest Green  
PMS 5605C



Gusty Grey  
PMS COOL GRAY  
9C



Majestic Purple  
PMS 2627C



Maroon  
PMS 504C



Navy  
PMS 533C



Sterling Grey



Teal  
PMS 7715C



True Royal  
PMS 7687C



White